

REDD+ under UNFCCC

Update after Accra Talks

REDD+/ETS workshop

Iddri, Paris, 27 October 08

cyril.loisel@iddri.org

Energy/climate program coordinator



Institut du développement durable et des relations internationales

27 rue Saint-Guillaume – 75337 Paris Cedex 07

www.iddri.org

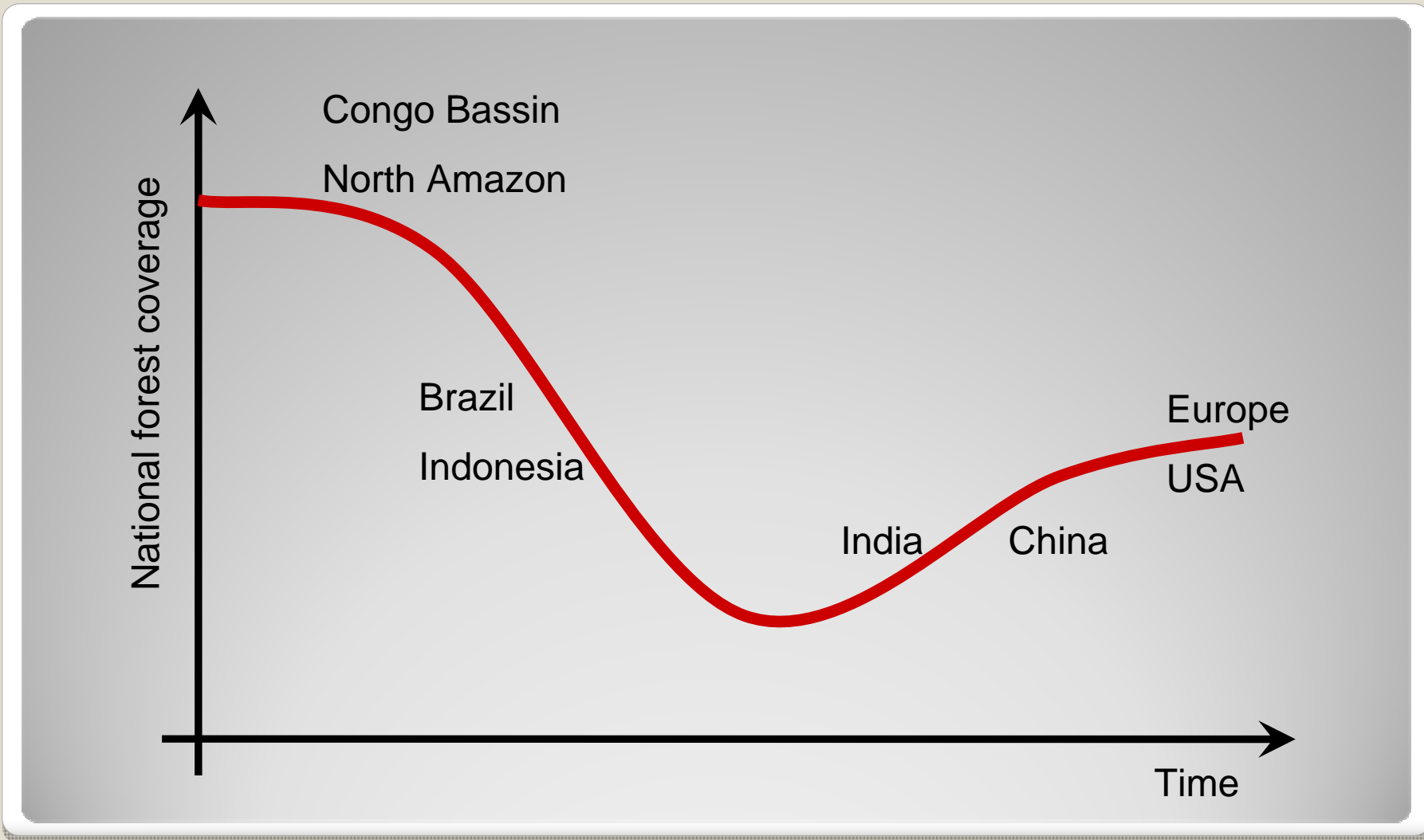
Context

- COP11 Montreal (2005)
 - Proposal by PNG and Costa Rica to address deforestation in post-Kyoto climate governance
- COP13 Bali (2007)
 - Bali action plan (Decision 1/CP.13) launches a process to reach an agreed outcome by COP15 on a Policy approaches and positive incentives on REDD and the role of conservation, SFM and enhancement of forest carbon stocks
 - Bali roadmap : Approches to stimulate action on REDD (Decision 2/CP.13) - Invitation to demonstration activities and methodological guidance for it

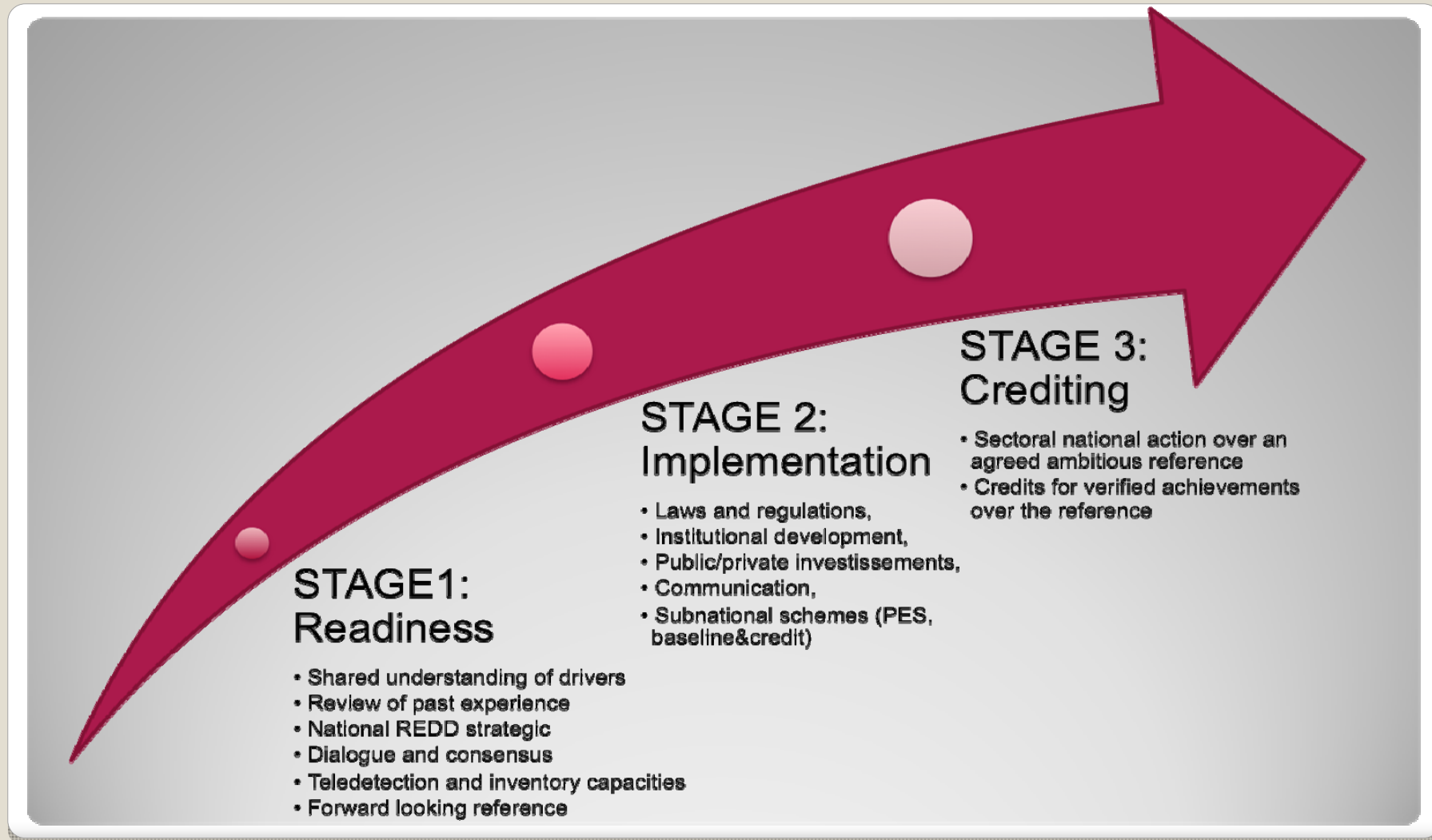
Institutional framework

- Parallel processes going forward to COP15 Copenhagen (2009)
 - Enhanced mitigation action (inc. policy approaches and positive incentives) under AWG LCA
 - Approaches to stimulate action under SBSTA
 - (LULUCF re-Annex I under AWG KP)

Address deforestation only vs. the lot?



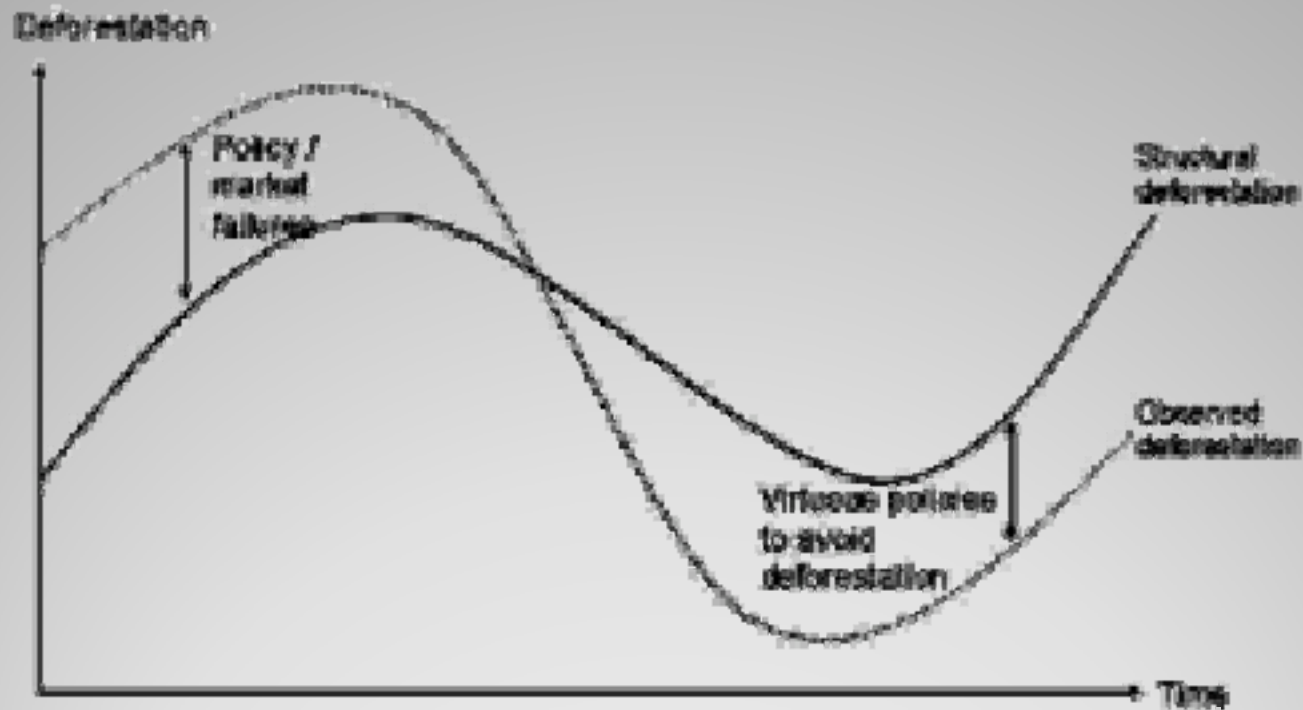
Input vs. output-based support?



Further areas of *soft* agreement

- Participation of forest-dependant communities should be secured
- Current knowledge of methodological issues sufficient to initiate discussions on policy approaches
- National inventories to rely on IPCC guidelines – with possible additions to be required
- Independant review of national inventories will be required pending on agreed mechanism
- Reference levels on a national basis – not only historical data

Historic vs. dynamic reference levels



Combes Motel & Pirard. A methodology to estimate impacts of domestic policies on deforestation. *Ecological Economics* (2008)



Save the forests!
Thank you.

cyril.loisel@iddri.org
REDD+/ETS Workshop - 27 October 08