

Une initiative du Programme international de recherche sur les institutions et les ressources forestières (IFRI)

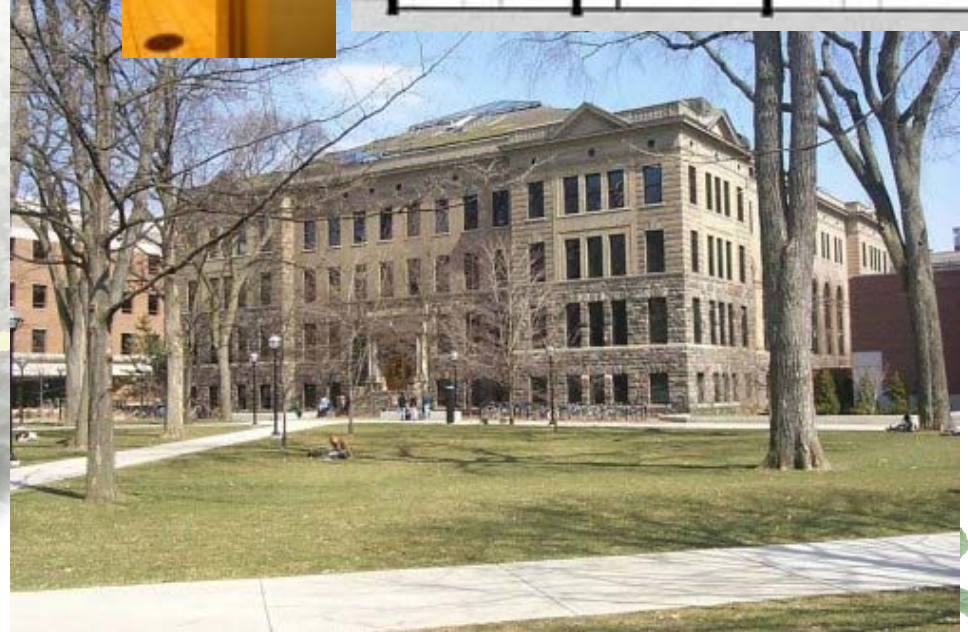
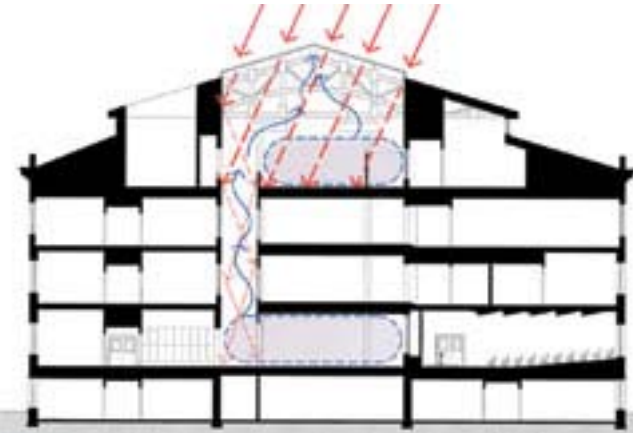
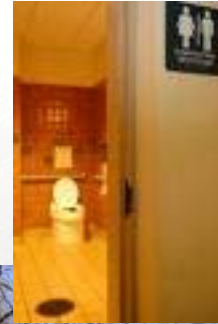


Résumé : Projet de recherche de
Forêts et institutions d'Afrique
Centrale (FIAC ou CAFI)
soutenu par la Fondation des
Sciences Nationales
2006-2011

Central African Forests and Institutions



Institutional Context: University of Michigan School of Natural Resources and Environment





Congo Basin Forestry: Political and Policy Context

- Yaoundé Heads of State Declaration
- The Congo Basin Forest Partnership
- Emerging Forest Peoples' Political Movement
- The Africa Forest Law Enforcement and Governance Declaration (FLEGT)
 - Changes in Laws, regulations and policy
 - Significant increase in financing for forests
 - Higher profile and role for industry, community, NGOs

Research Objectives

Illuminate the specific roles of different actors in processes of sustainable forest management and deforestation, including the little-understood contributions of NGOs



Research Objectives


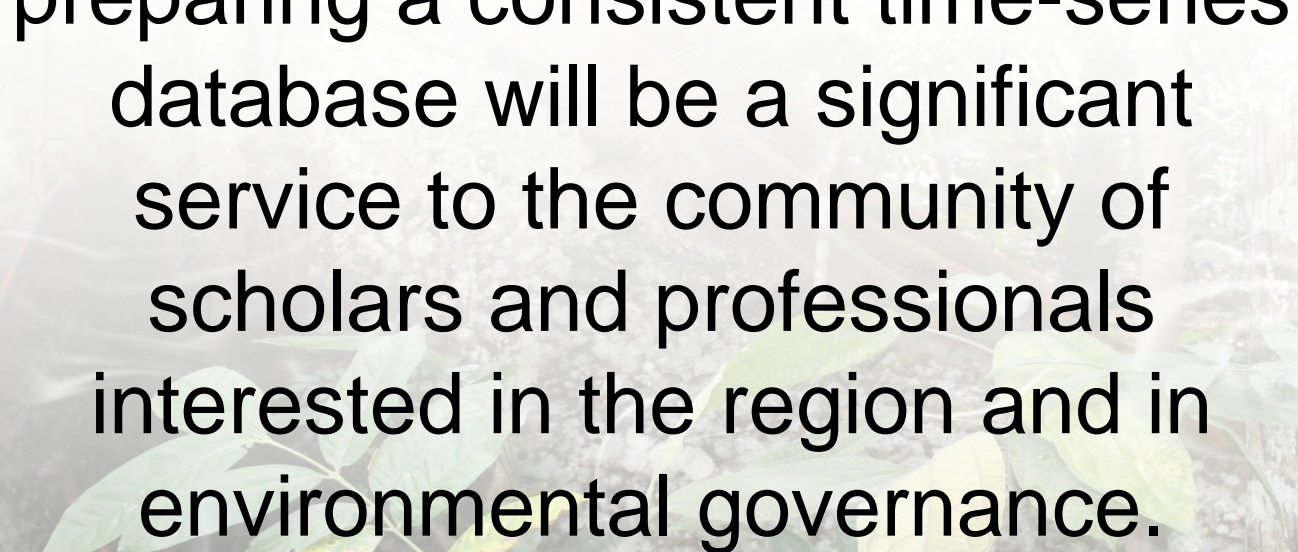
Analyze how variations in emerging forms of environmental governance involving corporate actors, communities and NGOs shape logging practices and forest cover in two countries: Cameroun and Republique du Congo (Brazzaville), each with distinct and recent transformations in relations of forest governance





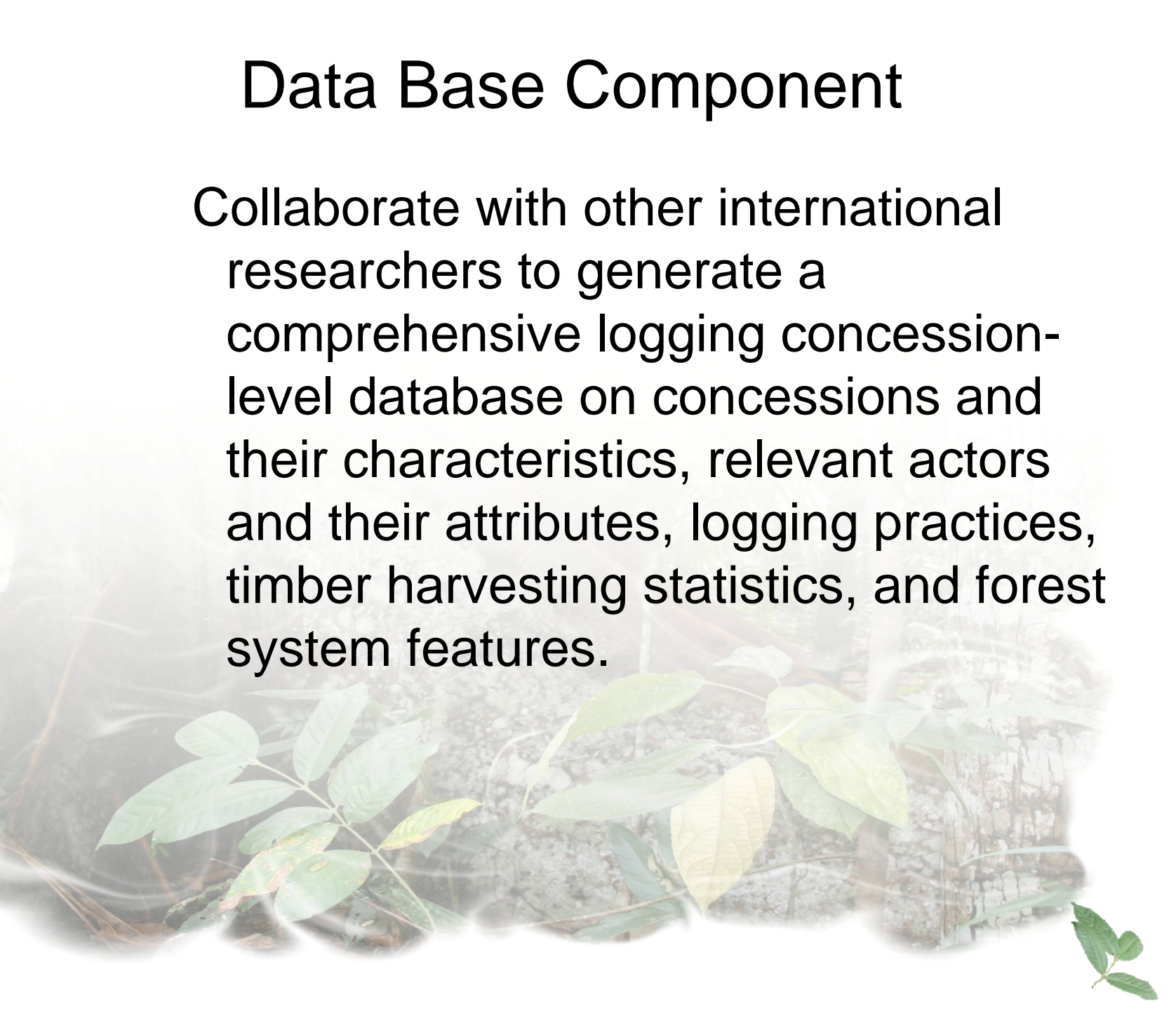
Research Methods/Study Design

Significant data are already available, but often in dispersed locations. Collecting the data and preparing a consistent time-series database will be a significant service to the community of scholars and professionals interested in the region and in environmental governance.



Data Base Component

Collaborate with other international researchers to generate a comprehensive logging concession-level database on concessions and their characteristics, relevant actors and their attributes, logging practices, timber harvesting statistics, and forest system features.



Data Base Component

Final data records will be made available with due provision for protecting sources when necessary, and a copy will also be permanently stored and made available to other scholars through the ICPSR at the University of Michigan.



Anthropology Component

Historical Research for Context on Colonial Concession Arrangements, Customary Uses, and Cultural/Political Ecology

Cultural research on practices, perceptions, interactions among actors (example: conflict de langage concept from Oyono's work)

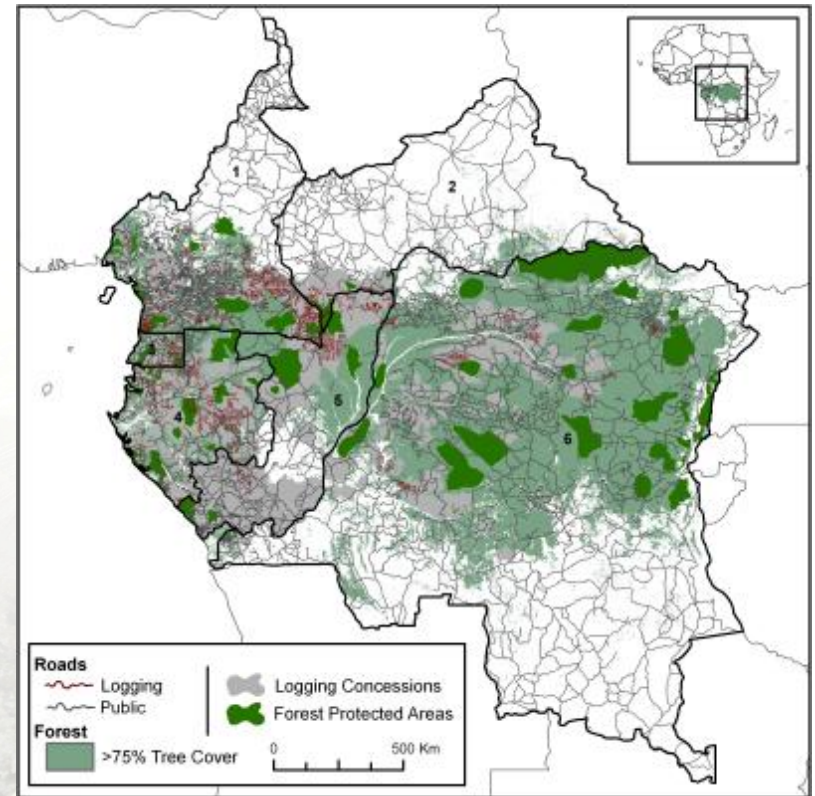


Photo by MJ Remis



GIS component

Working with archival maps from CAOM France and IGN France, as well as contemporary sources such as those produced by the team at Woods Hole, U.S., or Global Forest Watch, CIRAD



From Woods Hole study published in Science, June 2007

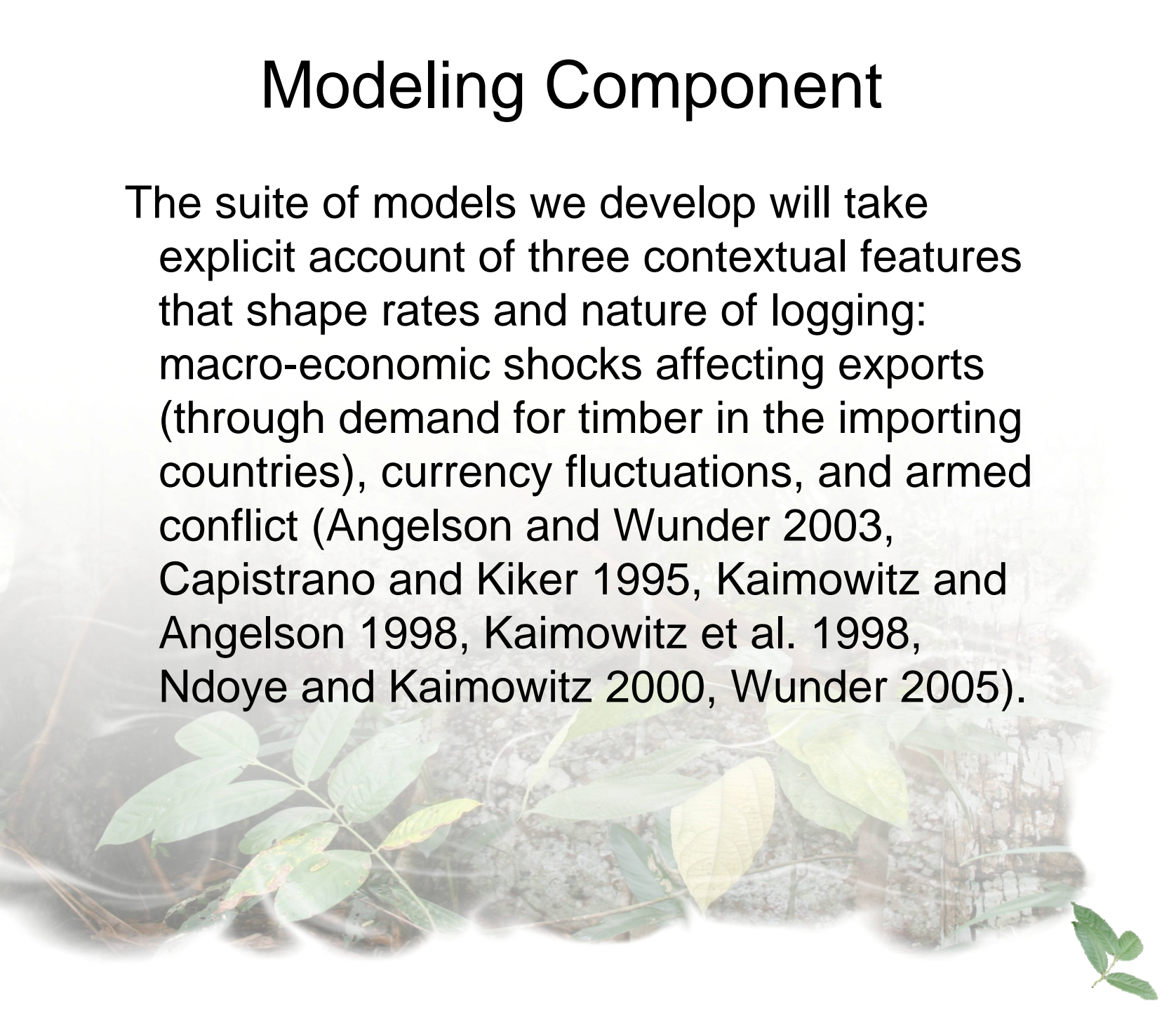
Modeling Component

We will collect and analyze available and new data at three points in time on different combinations of institutional forms, actor types, and actor choices and practices, and forest-cover outcomes to parametrize and compare innovative models of human-environmental interactions.



Modeling Component

The suite of models we develop will take explicit account of three contextual features that shape rates and nature of logging: macro-economic shocks affecting exports (through demand for timber in the importing countries), currency fluctuations, and armed conflict (Angelson and Wunder 2003, Capistrano and Kiker 1995, Kaimowitz and Angelson 1998, Kaimowitz et al. 1998, Ndoye and Kaimowitz 2000, Wunder 2005).



FIAC Premiere Phase

Identify key international contacts for conceptualization, collaboration, dissemination



Minister of Forests Elvis Ngolle Ngolle, for Cameroon,

Masesi and her children
Photo by melissa Remis



FIAC Premiere Phase

Review and monitor existing sources of scientific and policy information

Tropical Timber Market Report since 1990

Volume 12 Number 20, 18-31 October 2007

The ITTO Tropical Timber Market (TMM) Report, an output of the ITTO Market Information Service (MIS), is published in English every two weeks with the aim of improving transparency in the international tropical timber market. Its contents do not necessarily reflect the views or policies of ITTO. News may be reprinted without charge provided that the ITTO TMM Report is credited. A copy of the publication should be sent to the editor.

Snapshot

The downturn in Japan's plywood markets began to affect Malaysian and Indonesian exporters, while West African prices for plywood remained stable due to continued demand from Chinese importers. The monsoon season in Malaysia led to price rises for logs and plywood.

New actions were taken by a number of countries that will impact the trade of tropical timber. The EU was discussing the possibility of imposing a timber ban on Myanmar to protest recent developments in that country; Brazil was using forest police operations in an attempt to deter illegal exportation of wood; the Government of Guyana had also imposed a large fine on a local logging company for breaching government guidelines in its forestry operations.

The US housing slump was beginning to impact forestry operations in Brazil and North America. Brazil's pine plywood exports to the US had fallen so significantly that many firms were closing or scaling back production and seeking alternative markets. North American markets were also being hit by the housing crisis, which is causing a supply/demand imbalance, especially for panels. The weakening US dollar also had a bearing on global wood inquiries, adding pressure to timber prices, notably in Malaysia, Indonesia and Brazil.

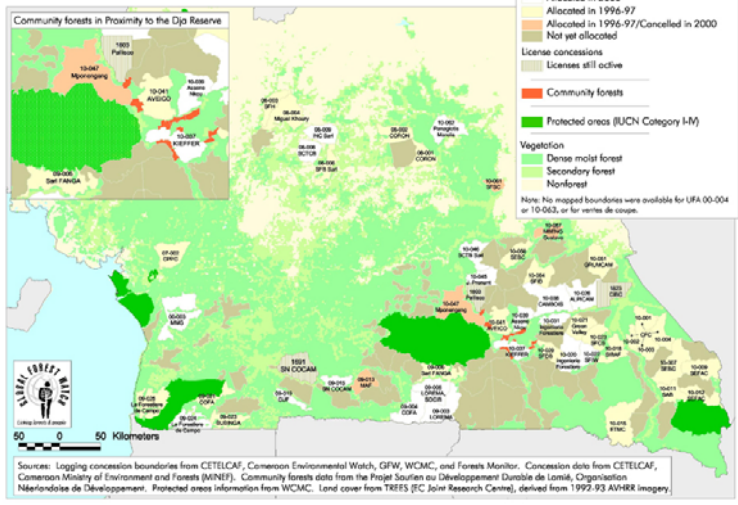
Contents	
Central/West Africa	2
China	2
Indonesia	3
Japan	4
Malaysia	4
Myanmar	5
Peru	7
Mexico	8
Panama	8
Bolivia	8
Guyana	8
Japan	9
China	9
Europe/Southeast Asia	10
UK	11
North America	11
Internet News	13
Commodities and Abbreviations	14
Ocean Freight Index	14
Appendix: Tropical Timber Price Trends	14

International Tropical Timber Organization (ITTO)
Market Information Service (MIS)

Headlines

- Sustained demand stabilises prices for West African logs 2
- China launches project to reduce WEEE waste 2
- ITTO to provide forecasts based on future Prospects 3
- Monsoon season in Malaysia leads to price rises 3
- Indonesia forestry minister calls for progress of UNCCC meeting 4
- EU may ban Myanmar timber 5
- Myanmar log prices slump amid EU proposed measures 5
- Government reviews plans as Amazon deforestation accelerates 6
- US housing slump impacts wood sector in southern Brazil 6
- Federal police operation in Brazil curbs illegal exports 6
- Peru's Lamba region leads in wood products exports 7
- Mexican state of Tlaxcala invests in commercial plantations 8
- Japan's demand for South-east Asian imports surges 9
- China unveils new policies for forest industry development 9
- FETC sets higher rates from Europe to Asia 11
- Additional homes will not avert housing crisis in England 11
- US housing slump declines to affect logging areas in Brazil 11
- Canada's primary and secondary wood industries focus on rebranding phase 12

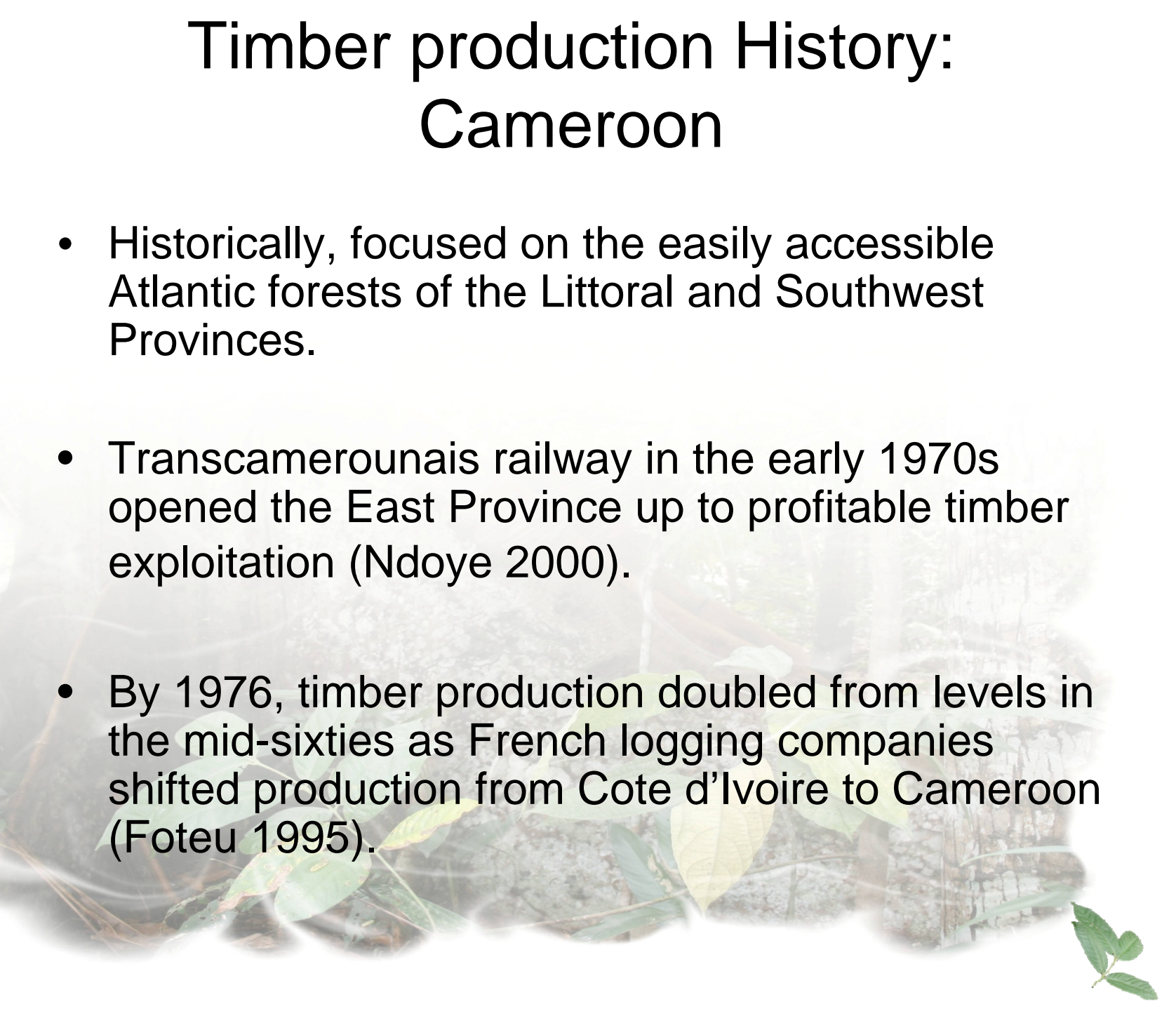
CAMEROON Logging Concessions February 2001



<http://www.minef.cm/>

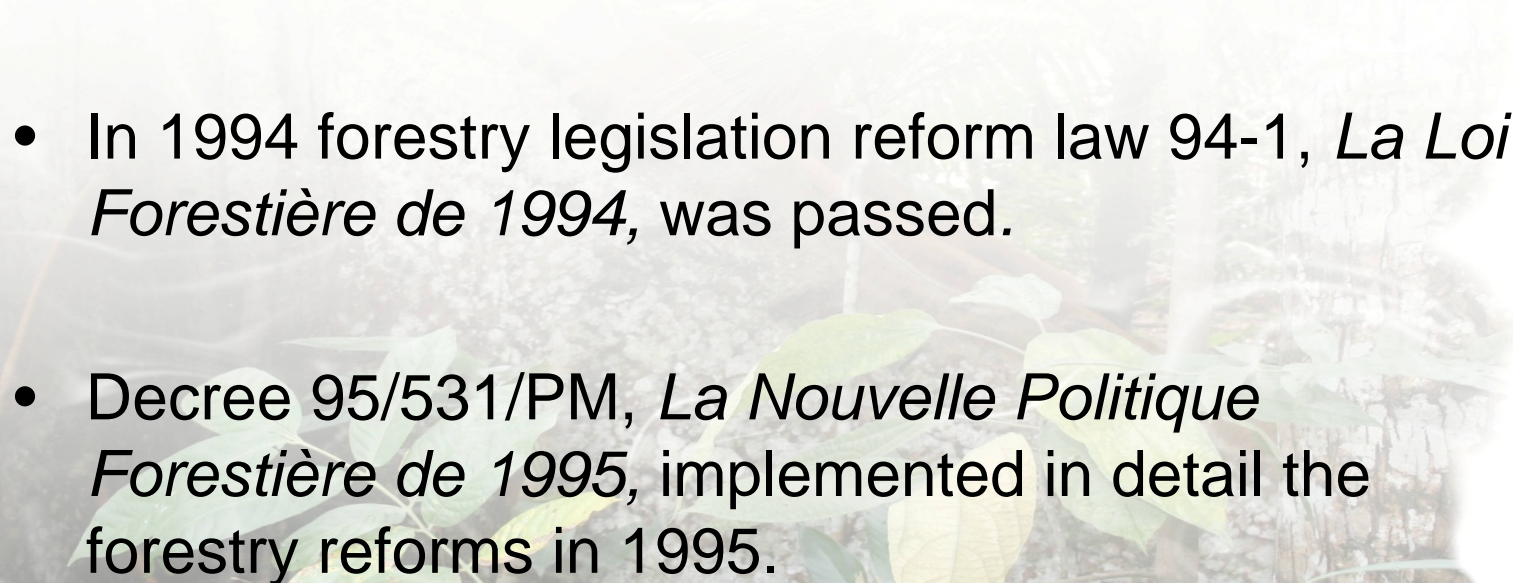

Timber production History: Cameroon

- Historically, focused on the easily accessible Atlantic forests of the Littoral and Southwest Provinces.
- Transcamerounais railway in the early 1970s opened the East Province up to profitable timber exploitation (Ndoye 2000).
- By 1976, timber production doubled from levels in the mid-sixties as French logging companies shifted production from Cote d'Ivoire to Cameroon (Foteu 1995).



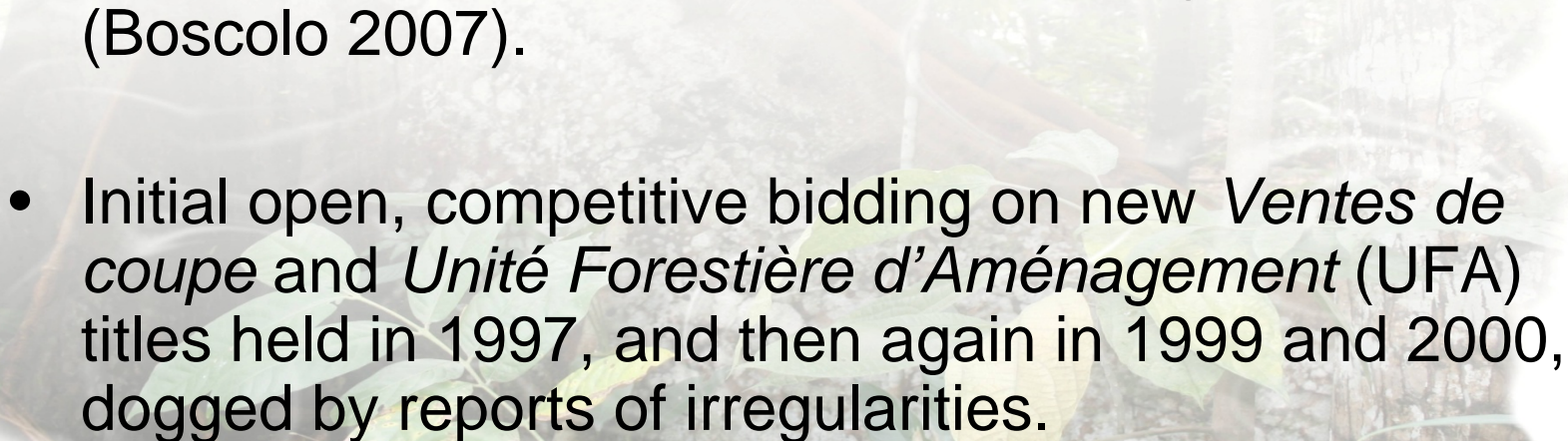



Cameroun's concessions: governance shifts in last decade

- Until 1997 allocated on a discretionary basis by the *Ministère de l'Environnement et des Forêts* (MINEF) under the Forest Law of 1981 and the Implementation Decree of 1983.
 - In 1994 forestry legislation reform law 94-1, *La Loi Forestière de 1994*, was passed.
 - Decree 95/531/PM, *La Nouvelle Politique Forestière de 1995*, implemented in detail the forestry reforms in 1995.
- 
- 



Cameroun's Concession Attribution Process

- UFA permits to firms for 15-year contracts with potential for one renewal (MINEF estimated the sustained-yield harvest cycle 30 years).
 - UFA permit holders must create a management plan, a task previously under purview of the government (Boscolo 2007).
 - Initial open, competitive bidding on new *Ventes de coupe* and *Unité Forestière d'Aménagement* (UFA) titles held in 1997, and then again in 1999 and 2000, dogged by reports of irregularities.
- 
- 

Permanent and Nonpermanent Forest Domain

Permanent: The government has legally committed to retaining cover of at least 30 percent of the national territory. Protected areas and some logging permits are included

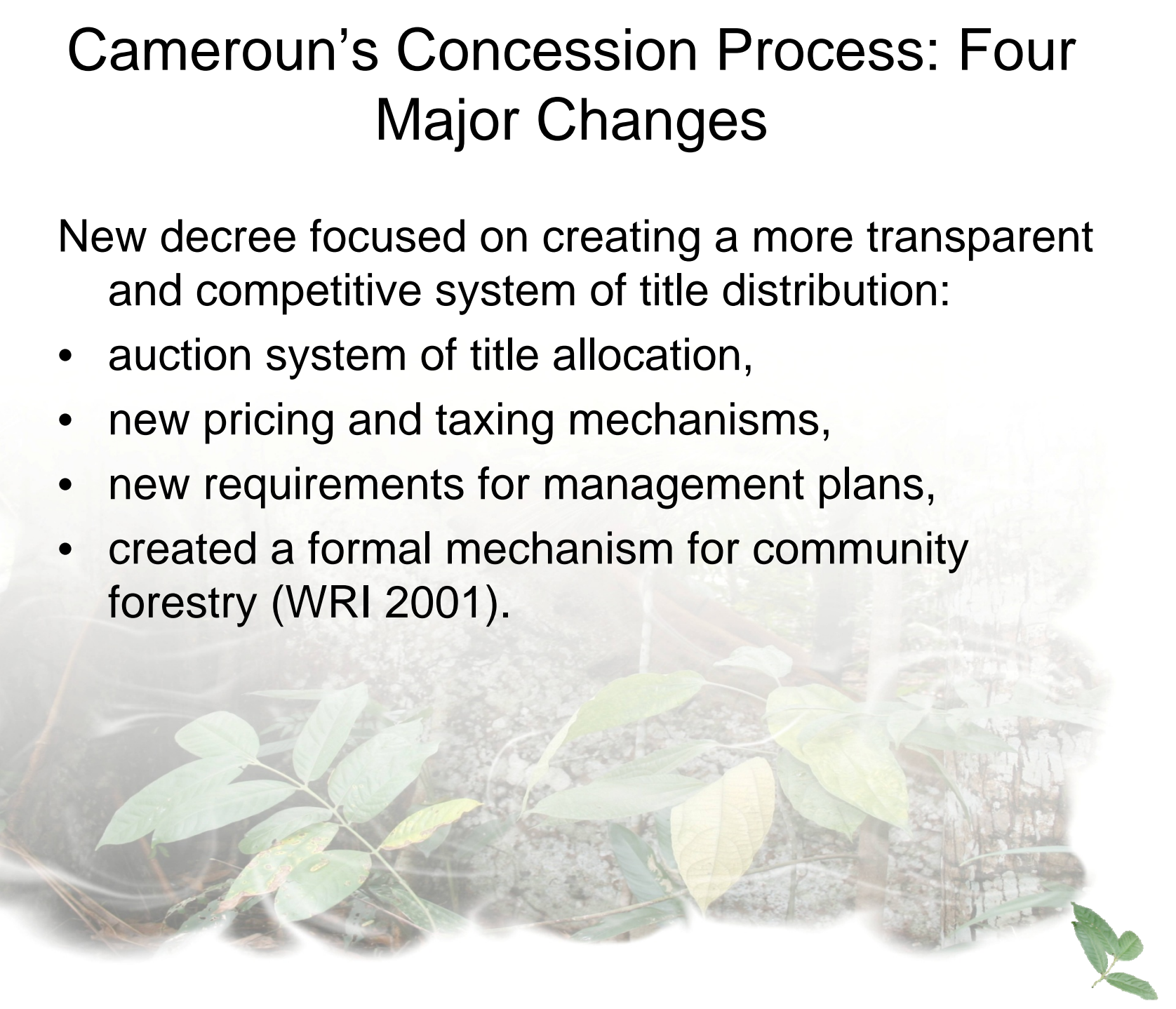
Nonpermanent can be converted to non-forest land; remaining logging permits and Community Forests are included



Cameroun's Concession Process: Four Major Changes

New decree focused on creating a more transparent and competitive system of title distribution:

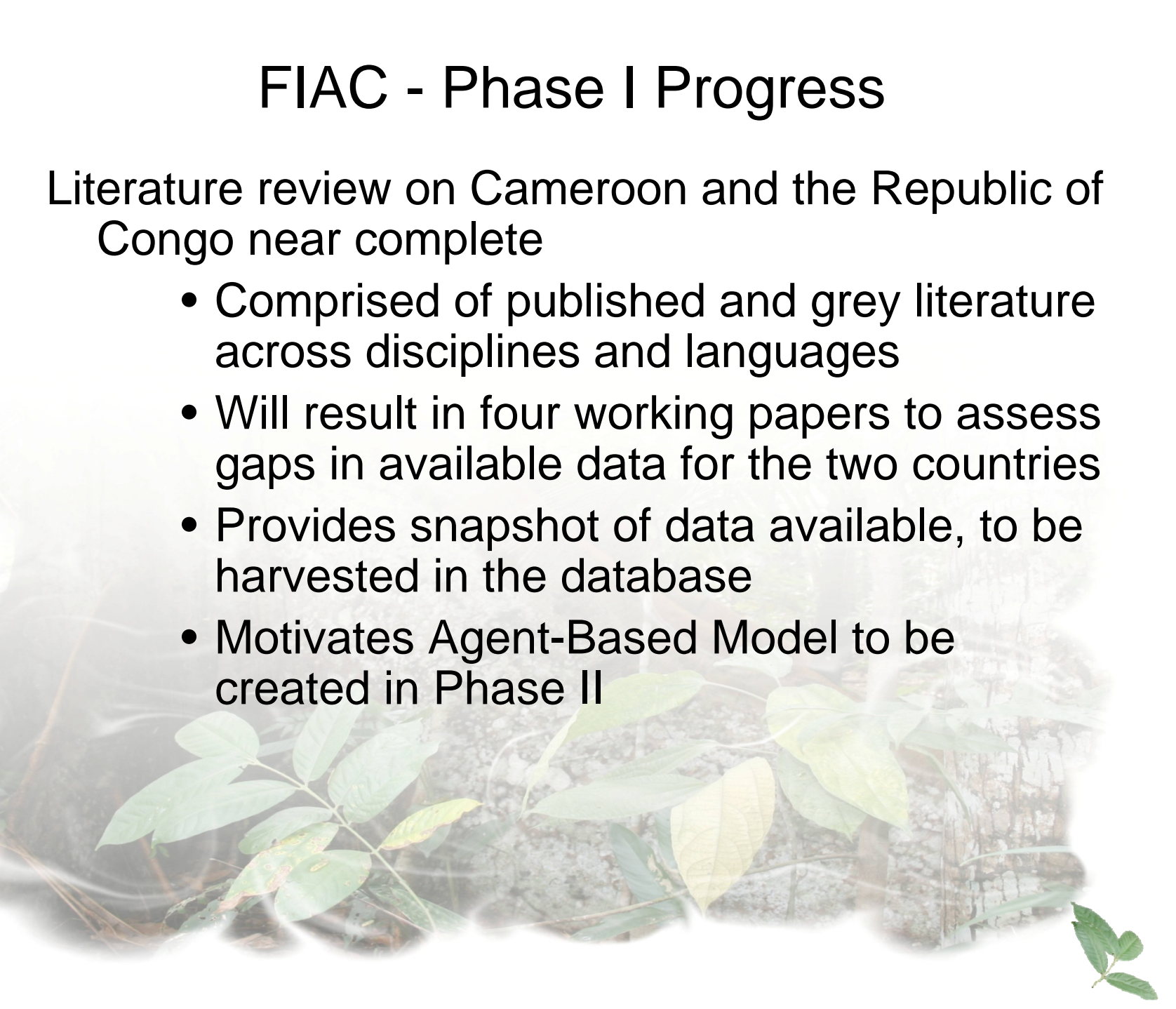
- auction system of title allocation,
- new pricing and taxing mechanisms,
- new requirements for management plans,
- created a formal mechanism for community forestry (WRI 2001).



FIAC - Phase I Progress

Literature review on Cameroon and the Republic of Congo near complete

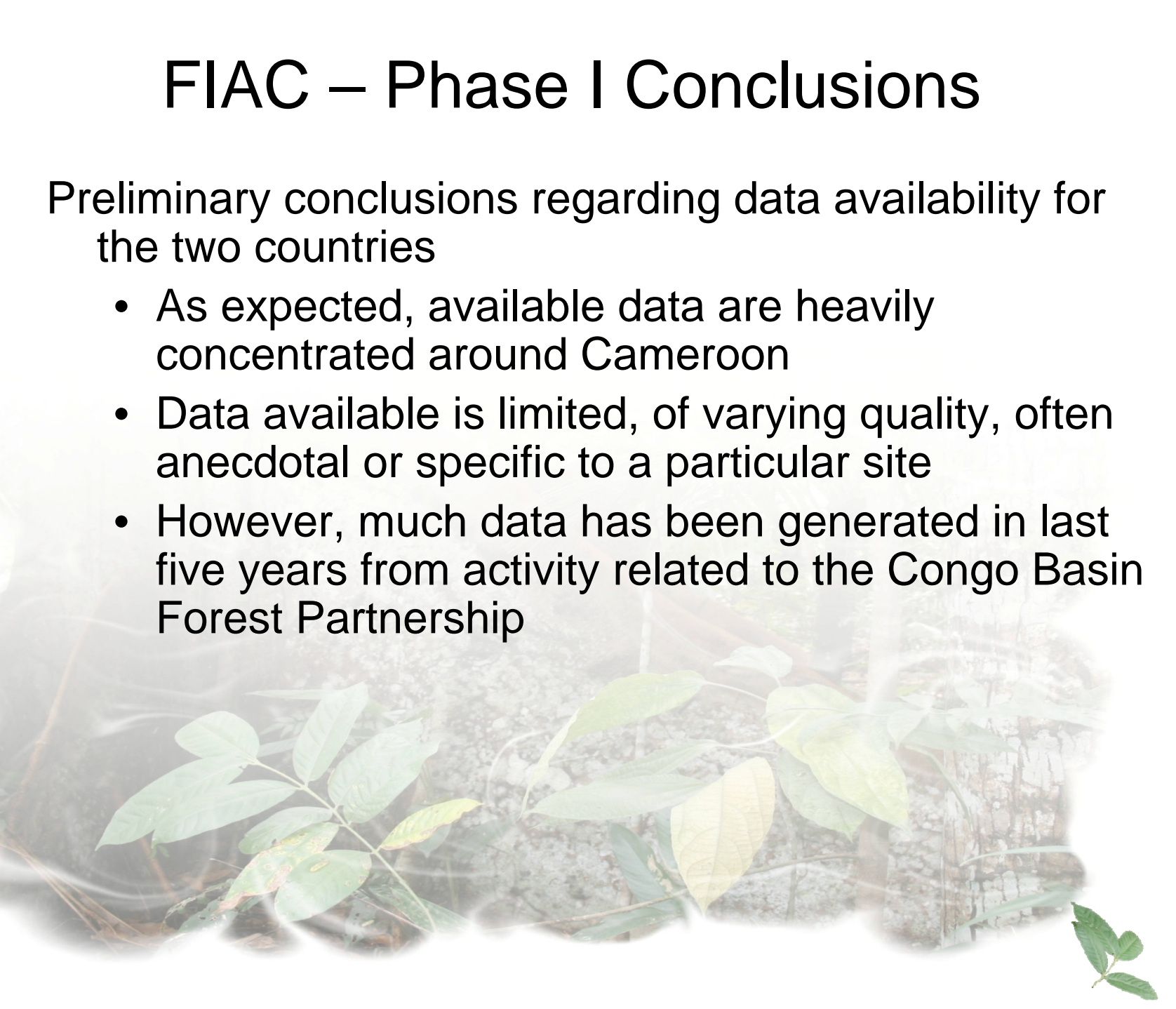
- Comprised of published and grey literature across disciplines and languages
- Will result in four working papers to assess gaps in available data for the two countries
- Provides snapshot of data available, to be harvested in the database
- Motivates Agent-Based Model to be created in Phase II



FIAC – Phase I Conclusions

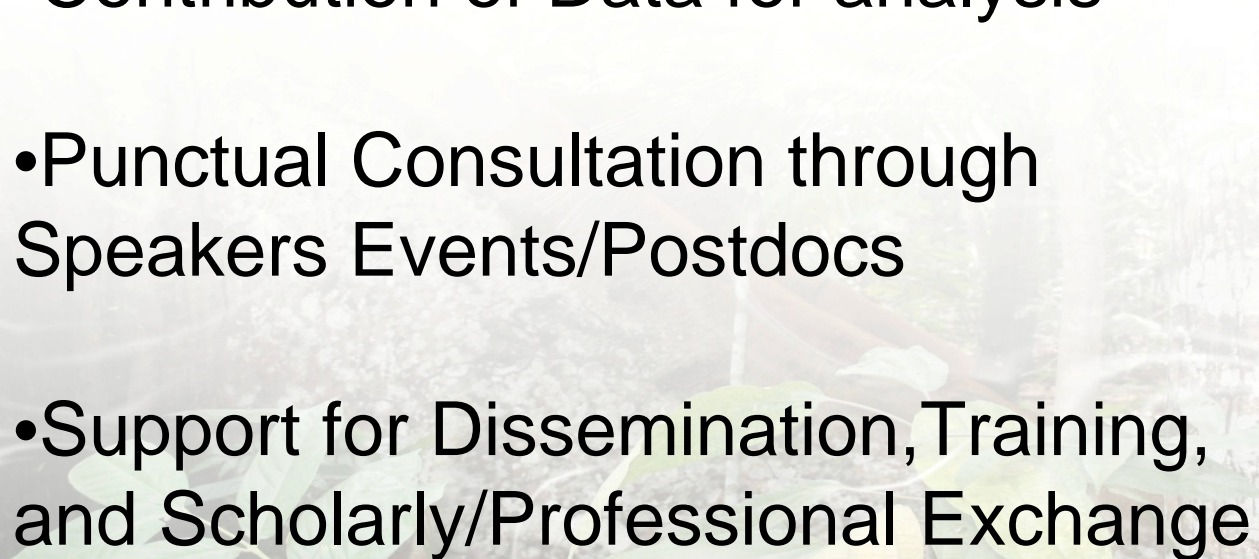

Preliminary conclusions regarding data availability for the two countries

- As expected, available data are heavily concentrated around Cameroon
- Data available is limited, of varying quality, often anecdotal or specific to a particular site
- However, much data has been generated in last five years from activity related to the Congo Basin Forest Partnership





Opportunities for Partnership

- Long Term Collaborative Research
 - Contribution of Data for analysis
 - Punctual Consultation through Speakers Events/Postdocs
 - Support for Dissemination, Training, and Scholarly/Professional Exchange
- 
- 

This week's speakers in for FIAC/CAFI

QuickTime™ and a
decompressor
are needed to see this picture.

